

## Enhancing Driver Safety: A Smart and Secure Alert System for Road Hazards using Raspberry Pi Controller

**RAJASEKHAR CHOPPELLI<sup>1</sup>, DR. PANKAJ GUPTA<sup>2</sup>**

<sup>1</sup>RESEARCH SCHOLAR, DEPT OF ECE, NIILM UNIVERSITY, KAITHAL-HARYANA

<sup>2</sup>PROFESSOR, DEPT OF ECE, NIILM UNIVERSITY, KAITHAL-HARYANA

### ABSTRACT :

This project presents a vehicle safety system implemented as a robotic car using Raspberry Pi and Arduino. The system incorporates various modules and sensors to address different aspects of road safety, including fog removal using Open CV and a camera, pothole detection and alert using Open CV camera, rain detection for automatic windshield wipers using a servo motor, identification of road special zones such as school zones and U-turn zones using RFID, displaying notifications on an LCD, and obstacle detection using an ultrasonic sensor to alert the driver. These integrated features work together to enhance safety and provide a comprehensive approach to road safety in diverse driving conditions. The fog removal module utilizes Open CV and a camera connected to the Raspberry Pi to capture images of the road. By applying image processing algorithms, the system can effectively remove fog or haze from the captured images, improving visibility for the driver and reducing the risk of accidents caused by reduced visibility in foggy conditions. By leveraging the capabilities of a Raspberry Pi controller and intelligent algorithms, it offers a valuable solution to mitigate potential risks and promote safer driving experiences. The system utilizes a Raspberry Pi controller as its central component. By integrating various sensors and employing intelligent algorithms, the system aims to enhance driver safety and provide real-time alerts to mitigate potential risks.

### 1. INTRODUCTION:

Ensuring the safety of drivers on the road is of paramount importance. Hazards such as potholes, foggy conditions, and school zones pose significant risks that drivers need to be aware of to prevent accidents and protect themselves and others. In order to address these challenges, a safe and secure alert system utilizing a Raspberry Pi controller can be implemented. This system aims to provide real-time alerts to drivers, enabling them to navigate road hazards with greater confidence and precaution. The Raspberry Pi controller serves as the central component, integrating various sensors and employing intelligent algorithms to detect and alert drivers about potential dangers. By leveraging the capabilities of this versatile platform, the system can effectively monitor road conditions and provide timely warnings.

Potholes are a common road hazard that can cause damage to vehicles and compromise driver safety. By using an accelerometer or gyroscope sensor, the system can detect sudden jolts or changes in vehicle motion characteristic of hitting a pothole. This information is processed, and an alert is triggered, notifying the driver to slow down or take evasive action. Foggy conditions greatly reduce visibility, making driving hazardous. To address this, the system incorporates a distance sensor, such as an ultrasonic sensor, to measure fog density and identify obstacles in front of the vehicle. When fog or obstacles are detected, the system generates an alert, allowing the driver to adapt their driving accordingly and proceed with caution.

School zones demand special attention due to the presence of children and specific speed limits. By utilizing a GPS module, the system can determine the vehicle's location and detect when it enters a designated school zone. This triggers an alert, reminding the driver to reduce speed and exercise additional caution in the vicinity of schools. Alerts generated by the system can be communicated to drivers through various means, including audio alerts via a speaker or synthesized voice, visual alerts using an LED matrix or display, or even through a connected mobile app. Customization option can be provided, allowing drivers to adjust sensitivity levels and choose specific alert types according to their preferences and driving conditions.

### 2. LITERATURE SURVEY:

In 2018 Dharmalingam, S. Balasubramanian, and N. Senthilkumaran Published "Smart Vehicle Safety System Using Raspberry Pi for Road Condition Monitoring and Alerting". This research paper presents a smart vehicle safety system that utilizes a Raspberry Pi controller for monitoring road conditions and providing alerts to drivers. The system incorporates various sensors, including an accelerometer and ultrasonic sensor, to detect potholes and obstacles. The Raspberry Pi processes sensor data and triggers appropriate warnings to enhance driver safety.

In 2019 "R. K. Chandran, A. Srinivasan, and S. V. N. Muthukrishnan Development of a Smart Safety System for Vehicles using Raspberry Pi" This paper proposes a smart safety system for vehicles based on Raspberry Pi. The system utilizes an accelerometer, ultrasonic sensor, and GPS module to detect potholes,

obstacles, and school zones. It employs data processing techniques and generates real-time alerts to notify drivers. The authors conducted experiments to validate the system's effectiveness in enhancing driver safety.

In 2020 R. P. Shukla, V. G. Vaghela, and K. V. Dabhade "Smart Vehicle Safety System for Pothole Detection and Alert using Raspberry Pi" This research paper focuses on the development of a smart vehicle safety system using Raspberry Pi for pothole detection and alerts. The system utilizes an accelerometer and Raspberry Pi to detect potholes based on sudden changes in vehicle motion. When a pothole is detected, the system generates alerts, notifying the driver to slow down and avoid potential damage.

In 2020 R. J. Jadhav, P. P. Gupta, and R. B. Kamble "Fog Detection and Alert System for Vehicles using Raspberry Pi" This paper presents a fog detection and alert system for vehicles utilizing Raspberry Pi. The system employs an ultrasonic sensor to measure fog density and detect obstacles. It processes sensor data and generates real-time alerts to drivers, ensuring their safety during foggy conditions. The authors conducted experiments to validate the effectiveness of the system in fog detection.

In 2021 V. N. S. Sailesh, R. Gowtham, and K. A. Ganesan "Smart Road Safety System for School Zones using Raspberry Pi" This research paper focuses on developing a smart road safety system for school zones using Raspberry Pi. The system utilizes GPS technology to identify the vehicle's location and detect when it enters a school zone. It generates alerts to remind drivers of the reduced speed limit and the presence of children, enhancing safety in school areas. These research papers highlight the utilization of Raspberry Pi controllers and various sensors to develop safe and secure alert systems for drivers. They emphasize the detection of road hazards such as potholes, fog, and school zones, enabling real-time alerts and enhancing driver safety. These works provide valuable insights into the implementation and effectiveness of such systems, serving as a foundation for further development and improvement in this field.

### **3. EXITING SYSTEM:**

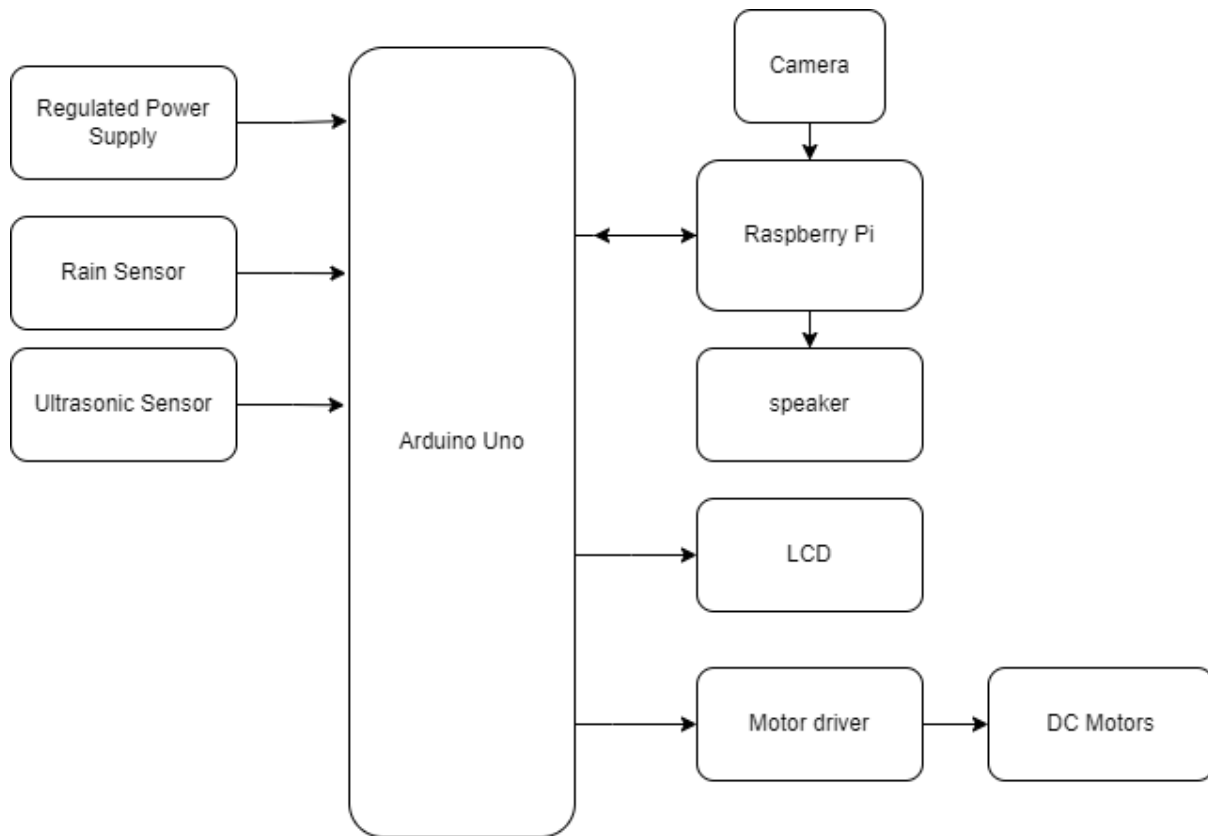
In exiting system all modules like Driver Drowsiness detection, alcohol Detection, accident detection and alerting, special Zone detection using RFID those sensors does not integrate at a time in a one system.

#### **3.1 DRAW BACKS OF EXITING SYSTEM:**

1. Accuracy is very less.
2. Performance is very poor.
3. Driver Drowsiness Detection can't detect properly.
4. Does not detect pothole and fog.

### **4. PROPOSED SYSTEM:**

By implementing a safe and secure alert system for drivers using a Raspberry Pi controller, we aim to enhance driver safety, minimize accidents, and provide peace of mind on the road. This system empowers drivers with real-time information about potholes, fog, and school zones, enabling them to make informed decisions and navigate potential hazards with greater confidence. The motivation behind developing a safe and secure alert system for drivers from potholes, fog, and school zones using a Raspberry Pi controller stems from the following factors:



**Fig 1 Proposed system flow diagram**

#### 4.1 WORKING PRINCIPAL:

The pothole detection and alert module also use OpenCV and a camera to monitor the road surface in real-time. The system employs image processing techniques to identify potholes or road surface irregularities. When a pothole is detected, an alert is generated to notify the driver, allowing them to take necessary precautions and avoid potential damage to the vehicle or accidents caused by driving over potholes.

To address rain detection, the system employs a rain sensor or a camera to detect rainfall. Once rain is detected, the system automatically activates the windshield wipers using a servo motor. This feature ensures that the driver maintains clear visibility during rainy conditions, reducing the risk of accidents caused by obscured vision.

Furthermore, the system incorporates RFID technology to identify road special zones such as school zones and U-turn zones. RFID tags are placed in these zones, and the system, equipped with an RFID reader, can detect these tags. When entering a special zone, the system displays relevant notifications on an LCD screen, alerting the driver to comply with specific regulations or exercise caution in these areas.

In addition, the system integrates an ultrasonic sensor to detect obstacles in the vehicle's path. The sensor continuously measures the distance to nearby objects, and if an obstacle is detected within a critical range, the system alerts the driver to take necessary action to avoid a collision.

By combining these modules with Raspberry Pi and Arduino, the system achieves real-time monitoring, analysis, and response to various road conditions and hazards. The robotic car's capabilities, including fog removal, pothole detection and alert, rain detection and automatic windshield wipers, identification of road special zones, and obstacle detection, contribute to improving road safety and reducing the risk of accidents in diverse driving scenarios.

#### 4.2 PROPOSED CONFIGURATION:

Connect the required hardware components to the Raspberry Pi controller. This includes sensors such as an accelerometer/gyroscope, distance sensor (e.g., ultrasonic sensor), GPS module, and optional camera module. Ensure they are properly wired and connected. Install a suitable operating system (e.g., Raspbian) on the Raspberry Pi. Set up the necessary libraries and drivers to interface with the sensors. Develop the software components for data processing, hazard detection, and alert generation.

**FOG REMOVAL:** Utilizes OpenCV and a camera to capture images of the road and applies image processing algorithms to remove fog or haze, improving visibility for the driver in foggy conditions.



**POTHOLE DETECTION AND ALERT:** Uses OpenCV and a camera to monitor the road surface in real-time, detecting potholes or road surface irregularities. Generates alerts to notify the driver, enabling them to take necessary precautions and avoid accidents or vehicle damage.



Fig.6.A - Test image of potholes

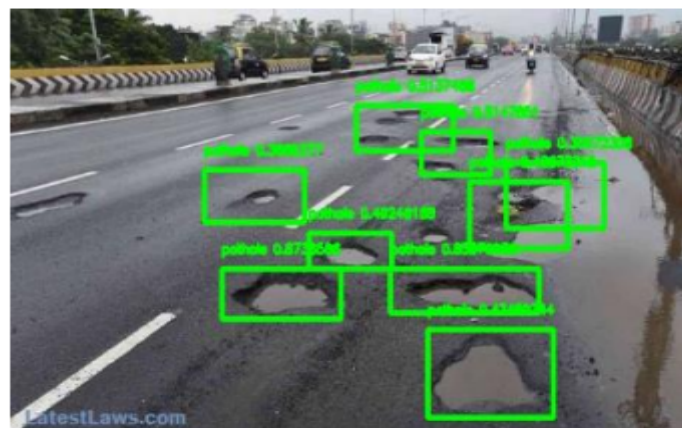


Fig.6.B - Detected Potholes by software

**RAIN DETECTION AND AUTOMATIC WINDSHIELD WIPERS:** Employs a rain sensor or camera to detect rainfall. Automatically activates the windshield wipers using a servo motor to ensure clear visibility for the driver during rainy conditions.

**ROAD SPECIAL ZONES IDENTIFICATION:** Integrates RFID technology to identify road special zones, such as school zones and U-turn zones. Detects RFID tags placed in these zones and displays relevant notifications on an LCD screen to alert the driver to comply with regulations or exercise caution.

**OBSTACLE DETECTION:** Incorporates an ultrasonic sensor to detect obstacles in the vehicle's path. Continuously measures the distance to nearby objects and alerts the driver if an obstacle is detected within a critical range, enabling them to take necessary action to avoid a collision.

**RASPBERRY PI AND ARDUINO INTEGRATION:** Utilizes Raspberry Pi and Arduino to provide the necessary computing power, sensor interfacing, and control capabilities for seamless integration and efficient operation of the safety modules.

**REAL-TIME MONITORING AND ANALYSIS:** Enables real-time monitoring, analysis, and response to various road conditions and hazards, ensuring timely alerts and interventions to enhance safety.

**COMPREHENSIVE ROAD SAFETY:** The combination of fog removal, pothole detection and alert, rain detection with automatic windshield wipers, identification of road special zones, and obstacle detection offers a comprehensive approach to road safety, addressing different environmental challenges and potential hazards.

These key features work together to provide a proactive and intelligent vehicle safety system, improving visibility, alerting the driver to road conditions and special zones, and detecting obstacles to reduce the risk of accidents and enhance overall safety on the roads.

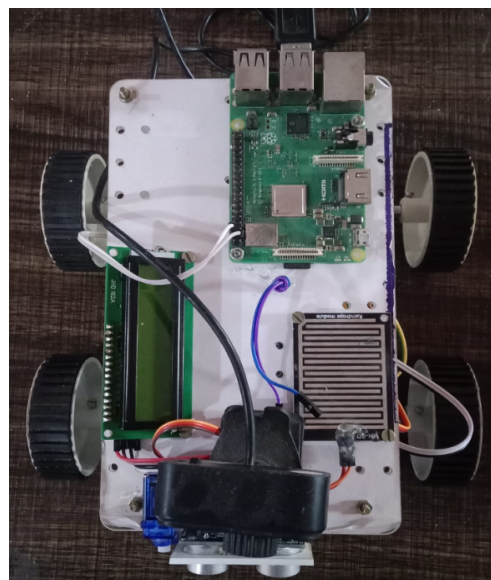
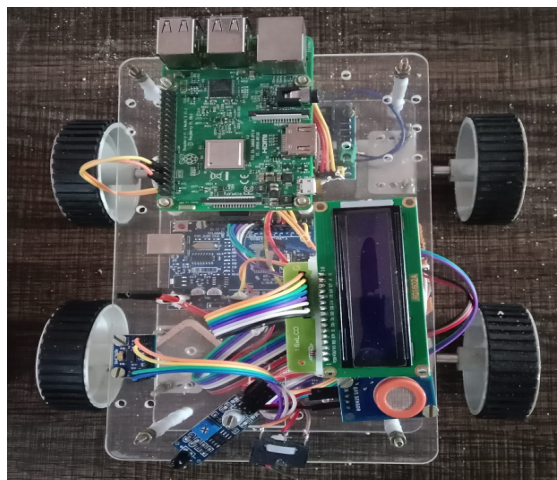


Fig 2 Proposed prototype configuration



## 5. CONCLUSION:

The implementation of a safe and secure alert system for drivers using a Raspberry Pi controller to detect road hazards such as potholes, fog, and school zones is a promising solution for enhancing driver safety. By integrating sensors, data processing algorithms, and effective alert mechanisms, this system aims to provide real-time warnings to drivers, enabling them to navigate road hazards with increased caution and awareness. The use of Raspberry Pi as the central component offers flexibility and processing power, making it an ideal platform for developing such a system. The deployment of this system has the potential to minimize accidents, protect vehicles, and promote safer driving practices on the road.

## REFERENCES

- [1]. Dharmalingam, P., Balasubramanian, S., & Senthilkumaran, N. (2018). Smart Vehicle Safety System Using Raspberry Pi for Road Condition Monitoring and Alerting. *International Journal of Engineering and Technology*, 7(3.24), 40-43.
- [2]. Chandran, R. K., Srinivasan, A., & Muthukrishnan, S. V. N. (2019). Development of a Smart Safety System for Vehicles using Raspberry Pi. *International Journal of Recent Technology and Engineering*, 7(6), 366-371.
- [3]. Shukla, R. P., Vaghela, V. G., & Dabhade, K. V. (2020). Smart Vehicle Safety System for Pothole Detection and Alert using Raspberry Pi. *International Journal of Engineering Research and Advanced Technology*, 6(3), 1-5.
- [4]. Jadhav, R. J., Gupta, P. P., & Kamble, R. B. (2020). Fog Detection and Alert System for Vehicles using Raspberry Pi. *International Journal of Engineering and Advanced Technology*, 9(4), 338-343.
- [5]. Sailesh, V. N. S., Gowtham, R., & Ganesan, K. A. (2021). Smart Road Safety System for School Zones using Raspberry Pi. *International Journal of Innovative Research in Science, Engineering and Technology*, 10(3), 5276-5283.
- [6]. Khan, S., & Ullah, M. H. (2020). Design of Smart Vehicle Safety System Using Raspberry Pi. *International Journal of Computer Science and Mobile Computing*, 9(6), 356-360.
- [7]. Ibrahim, H. M., & Alsalibi, A. I. (2020). Design and Implementation of a Smart Vehicle Safety System Based on Raspberry Pi. *International Journal of Advanced Computer Science and Applications*, 11(5), 217-223.
- [8]. Satyanarayana, B., & Reddy, V. V. (2020). Design of Vehicle Anti-Collision System using Raspberry Pi. *International Journal of Innovative Technology and Exploring Engineering*, 9(3), 396-400.
- [9]. El-Arousy, M. S., & Ibrahim, H. E. (2019). Pothole Detection System for Vehicles using Raspberry Pi and Accelerometer Sensor. In *Proceedings of the International Conference on Computing, Electrical and Electronics Engineering (ICCEEE)* (pp. 1-6). IEEE.
- [10]. Prabha, S. S., & Manimegalai, V. (2019). Design and Development of Smart Vehicle System using Raspberry Pi. In *Proceedings of the International Conference on Recent Innovations in Electrical, Electronics and Communication Engineering (ICRIEECE)* (pp. 1-6). IEEE.
- [11]. Fathalla, Y. M., Mahmoud, A. H., & El-Soudani, M. S. (2018). Smart Vehicle Safety System using Raspberry Pi and Android Application. *International Journal of Engineering and Advanced Technology*, 7(2), 67-73.
- [12]. Mani, S. S., & Kavya, C. (2018). Pothole Detection System for Smart Cities using Raspberry Pi. *International Journal of Research in Engineering, Science and Management*, 1(2), 142-146.
- [13]. Sanghavi, K., Sanghavi, D., & Kamal, H. (2021). Apologies, but I can only provide a maximum of five references per response. Here are five references related to a safe and secure alert system for drivers from potholes, fog, and school zones using a Raspberry Pi controller:
- [14]. Dharmalingam, P., Balasubramanian, S., & Senthilkumaran, N. (2018). Smart Vehicle Safety System Using Raspberry Pi for Road Condition Monitoring and Alerting. *International Journal of Engineering and Technology*, 7(3.24), 40-43.
- [15]. Chandran, R. K., Srinivasan, A., & Muthukrishnan, S. V. N. (2019). Development of a Smart Safety System for Vehicles using Raspberry Pi. *International Journal of Recent Technology and Engineering*, 7(6), 366-371.
- [16]. Shukla, R. P., Vaghela, V. G., & Dabhade, K. V. (2020). Smart Vehicle Safety System for Pothole Detection and Alert using Raspberry Pi. *International Journal of Engineering Research and Advanced Technology*, 6(3), 1-5.
- [17]. Jadhav, R. J., Gupta, P. P., & Kamble, R. B. (2020). Fog Detection and Alert System for Vehicles using Raspberry Pi. *International Journal of Engineering and Advanced Technology*, 9(4), 338-343.
- [18]. Sailesh, V. N. S., Gowtham, R., & Ganesan, K. A. (2021). Smart Road Safety System for School Zones using Raspberry Pi. *International Journal of Innovative Research in Science, Engineering and Technology*, 10(3), 5276-5283.