

Enhancing Personal Identification Security for Improved Accuracy and Reliability

Ramadevi Jaida¹, Danthala Ramya¹, Gajibinkar Divya¹

¹Assistant Professor, Department of Electronics and Communication Engineering

¹Malla Reddy Engineering College and Management Sciences, Kistapur, Medchal, Hyderabad, 501401, Telangana, India

ABSTRACT

Biometric technologies offer enhanced security and increased accuracy in safeguarding personal identifications and addressing highly secure identification challenges. The utilization of this technology has gained prominence in recent years as a result of the increase in transaction frauds, security breaches, and issues related to personal identification. Biometric technology offers the advantage of generating a distinct code for each individual, hence rendering it impervious to replication or forgery by unauthorized parties. These systems are gaining significant traction in the interconnected world, displacing traditional methods such as passwords and keys due to their enhanced dependability, distinctiveness, and the growing need for heightened security. Currently, fingerprint biometric systems are commonly utilized. However, there are numerous opportunities to replicate an individual's fingerprints without their knowledge. Therefore, it is possible to engage in fraudulent activities by creating counterfeit documents in order to gain unauthorized access to his personal accounts, computers, and even withdraw cash from automated teller machines (ATMs), among other actions. In this paper, we present a proposed personal identification system that utilizes palm prints as a means of overcoming the limitations associated with fingerprint identification systems. Palm print identification is a burgeoning research field within biometric identification systems, offering distinct advantages such as uniqueness, scalability, expedited execution speed, and ample surface area for feature extraction. The method offers enhanced security compared to fingerprint biometric systems because to its extensive range of properties, including wrinkles, continuous ridges, primary lines, minutiae points, and unique points. The primary objective of the proposed palm print identification system is to develop and deploy a system that achieves enhanced accuracy and improved speed in the identification of palm prints belonging to multiple users. In this study, we propose a robust palm print identification system that prioritizes security. Our approach involves extracting the region of interest (ROI) using morphological operations and applying the undecimated bi-orthogonal wavelet (UDBW) transform to extract low-level features from registered palm prints. These features are then used to calculate feature vectors (FV). Finally, we compare the registered palm feature vector with the testing palm print feature vector by measuring their distance. The simulation findings demonstrate that the biometric identification system presented in this study exhibits enhanced accuracy and a higher degree of reliability in terms of recognition rate.

Key words: personal identification, fingerprint recognition, face recognition, IRIS recognition, ROI, Hybrid wavelet and recognition rate

1. INTRODUCTION

Identifying ourselves is omnipresent in our daily lives at many places, such as accessing bank accounts, cash draws from ATMs, computer logging, entering into protected sites, and so on. Formally, one can access themselves by physically carrying the passports, remembering pass words, access cards, keys, personal identification numbers (PINs), and secret codes. Regrettably, all the

mentioned identifications can be lost, copied, forgotten, or even stolen. Such loopholes or deficiencies cause many serious issues for all concerned people. For example, all over the world, hackers often interrupt computer networks; credit card fraud is estimated at billions of dollars per year. Forgotten password costs will be very high. Therefore, we need a solution for all the above deficiencies in conventional personal identification techniques: a more reliable, robust, and foolproof personal identification solution that could verify that physically he or she claims to be. A biometric is a method that recognizes the identity of a person or human being automatically by doing a statistical analysis of biological characteristics. The measurable characteristics can be physical, such as a finger, eye, face, or palm. Common modalities being used as biometric personal identification systems are face recognition and finger print identification. But authentication with the face is still a problem due to its illumination invariance, occlusion effects, and pose variations, whereas finger print does not have a good psychological effect on the user because of its wide use in investigations of crime. Hence, in the future, any biometric system that should succeed will have attributes like accuracy, easy acquisition, richness, uniqueness, reliability, and all above user acceptance. The palm print identification system is a new modality of biometric system that will overcome all the deficiencies that occur with conventional personal identification systems such as finger print, face recognition, and iris recognition. It not only has unique information but also has far more details, such as principal lines, creases, and wrinkles. Moreover, it has rich features to analyze more effectively and improve security. It has entered the biometric family and become the most promising personal identification system with higher security and improved accuracy due to its easy acquisition, reliability, and high user acceptance. There are many researchers in the literature who have developed palm print-based personal identification systems using edge detection, region of interest (ROI), discrete cosine transform (DCT), short time fourier transform (STFT), principle component analysis (PCA), and independent component analysis (ICA). All the above algorithms have suffered from a lack of feature extraction and time complexity. Here, we presented a highly secured palm print identification system with the extraction of regions of interest by applying a hybrid wavelet to extract the low-level features of registered palm prints to calculate their feature vectors, and then the comparison is done by measuring the distance between the registered palm feature vector and the tested palm print feature vector.

2. EXISTING METHODS

In the literature, there are many researchers who have developed biometric authentication modules based on various spatial and transformation domain techniques. D. Huang, W. Jia, and D. Zhang [1] proposed a novel algorithm for the automatic classification of low-resolution palm prints. First the principal lines of the palm are defined using their position and thickness. Principal lines are defined and characterized by their position and thickness. A set of directional line detectors is devised for principal line extraction. By using these detectors, the potential line initials of the principal lines are extracted and then, based on the extracted potential line initials, the principal lines are extracted in their entirety using a recursive process. The local information about the extracted part of the principal line is used to decide a ROI and then a suitable line detector is chosen to extract the next part of the principal line in this ROI. After extracting the principal lines, some rules are presented for palm print classification. A. Kong and D. Zhang [2] have presented a novel feature extraction method, the Competitive Coding Scheme for palm print identification. This scheme extracts the orientation information from the palm lines and stores it in the Competitive Code. An angular match with an effective implementation is developed for comparing Competitive Codes. Total execution time for verification is about 1s, which is fast enough for real-time applications. The proposed coding scheme has been evaluated using a database with 7,752 palm print images from 386 different palms. For

verification, the proposed method can operate at a high genuine acceptance rate of 98.4% and a low false acceptance rate of 3×10^{-6} . Dai and Zhou [3] introduces high resolution approach for palm print recognition with multiple features extraction. Features like minutiae, density, orientation, and principal lines are taken for feature extraction. For orientation estimation the DFT and Radon-Transform-Based Orientation Estimation are used. For minutiae extraction Gabor filter is used for ridges enhancement according to the local ridge direction and density. Density map is calculated by using the composite algorithm, Gabor filter, Hough transform. And to extract the principal line features Hough transform is applied. SVM is used as the fusion method for the verification system and the proposed heuristic rule for the identification system. Jiaa, Huang and Zhang [4] and [5] have proposed palm print verification based on robust line orientation code. Modified finite Radon transform has been used for feature extraction, which extracts orientation feature. For matching of test image with a training image the line matching technique has been used which is based on pixel-to-area algorithm. Zhang, Kong, You and Wong [6] have proposed Online Palm print Identification. The proposed system takes online palm prints, and uses low resolution images. Low pass filter and boundary tracking algorithm is used in preprocessing phase. Circular Gabor filter used for feature extraction and 2-D Gabor phase coding is used for feature representation. A normalized hamming distance is applied for matching. J. You, W. Kong, D. Zhang, and K. Cheung [7] proposed a dynamic selection scheme by introducing global texture feature measurement and the detection of local interesting points. Our comparative study of palm print feature extraction shows that palm print patterns can be well described by textures, and the texture energy measurement possesses a large variance between different classes while retaining high compactness within the class. The coarse-level classification by global texture features is effective and essential to reduce the number of samples for further processing at fine level. The guided searching for the best matching based on interesting points improves the system efficiency further. W. Li, J. You, and D. Zhang [8], have proposed an effective indexing and searching scheme for an image database to facilitate fast retrieval when the size of a palm print database is large. There are three key issues to be considered: feature extraction, indexing, and matching. In general, in an image database, the extracted features are often associated to the original images as indices. A search for the best matching is conducted in a layered fashion, where one feature is first selected to lead the search by reducing the set of candidates. Then other features are used to reduce the candidate set further. Such a process will be repeated until the final output is determined based on the given matching criteria. The selection of features plays an important role for efficient search. An effective feature selection scheme should exclude the most impossible candidates, compare easily, require small size of space for storage. Prasad, Govindan and Sathidevi [9], have proposed Palm print Authentication Using Fusion of Wavelet Based Representations. Features extracted are Texture feature and line features. In proposed system pre-processing includes low pass filtering, segmentation, location of invariant points, and alignment and extraction of ROI. OWE used for feature extraction. The match scores are generated for texture and line features individually and in combined modes. Weighted sum rule and product rule is used for score level matching. Cappelli, Ferrara, and Maio [9] proposed high resolution palm print recognition system which is based on minutiae extraction. Pre-processing is formed by segmentation of an image from its background. To enhance the quality of image, local frequencies and local orientations are estimated. Local orientation is estimated using fingerprint orientation extraction approach and local frequencies are estimated by counting the number of pixels between two consecutive peaks of gray level along the direction normal to local ridge orientation. Minutiae feature is extracted in feature extraction phase. To extract the minutiae features contextual filtering with Gabor filters approach is applied. Minutiae cylinder code has been used for matching the minutiae features. A. Gyaourova and A. Ross [10] have proposed an indexing technique that can either employ the biometric matcher that is already present in the

biometric system or use another independent matcher. Index codes are generated for each modality using the corresponding matcher. During retrieval, the index code of the probe is compared against those in the gallery using a similarity measure to retrieve a list of candidate identities for biometric matching. The proposed indexing technique on a chimeric multimodal database resulted in a reduction of the search space by an average of 84% at a 100% hit rate. The main factor for the amount of speedup during identification was the penetration rate of the indexing.

To overcome all the drawbacks of above works developed by many authors, here we supposed to introduce a highly secured biometric authentication system with palm print using UDBW transform and Morphological ROI extraction.

3. PROPOSED METHOD

Here in this section, we described the proposed palm print authentication model using hybrid process and UDBW transform. Figure 1 shows that the proposed model for palm print authentication, in which we had three modules:

- a. Registration process
- b. Testing and
- c. Palm matching

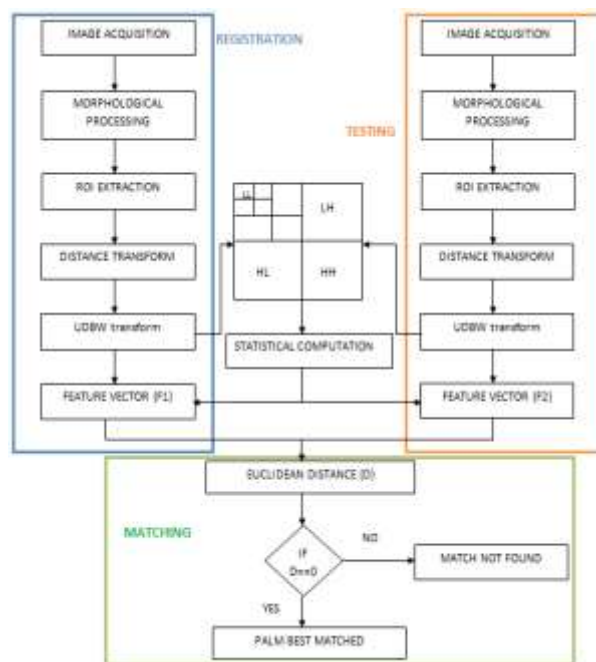


Fig. 1: Flow chart of proposed palm print authentication system.

3.1 Registration

In this module input palm image will be registered by applying region of interest with morphological operation there by calculate the distance transform and then extracting the low-level features using 3-level UDBW transform. After getting the UDBW coefficients, statistical computation will be done by taking the mean and variance of the decomposed coefficients. Then all the statistics will be stored in a vector to make a train feature vector.

Morphological Operation: Binary images may contain numerous imperfections. In particular, the binary regions produced by simple thresholding are distorted by noise and texture. Morphological image processing pursues the goals of removing these imperfections by accounting for the form and structure of the image.

ROI extraction: Region of interest is a selected samples subset within a dataset distinguished for a particular purpose. This can be used in many applications such as medical imaging, the tumor boundaries may be defined on an MR or CT image for measuring of its size. The endocardial border may be defined on an image, perhaps during different phases of the cardiac cycle, for example end-systole and end-diastole, for the purpose of assessing cardiac function. In geographical information systems (GIS), a ROI can be taken literally as a polygonal selection from a 2D map. In computer vision and optical character recognition, the ROI defines the borders of an object under consideration.

Distance Transform: The distance transform is an operator which can only be applied to binary images. It results in a gray level image which looks like same as input image, except that the gray level intensities of points inside foreground regions are changed to show the distance to the closest boundary from each point.

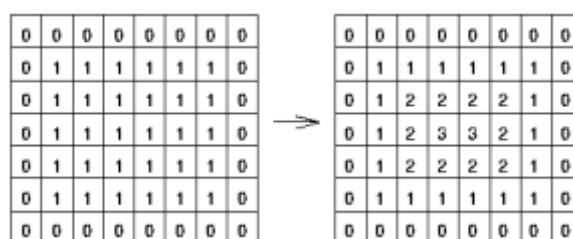


Fig. 2: Example of distance transform with chessboard metric.

3.2 Testing

The second module in the proposed system is testing process which includes that the database palm image will be selected for testing with the registered palm image by applying morphological processing; ROI extraction, distance transform and UDBW transform there by calculating the statistics to get the test feature vector.

3.3 Matching Process

In this step, Euclidean distance will be calculated between both the feature vectors i.e., train and test to obtain the most matched image that is stored in database to found that whether authorized person's identification is available or not. If the distance is zero then the person will be identified otherwise it displays that the match not found.

4. SIMULATION RESULTS

Experimental results have been done in MATLAB 2014a version with various palm images by using proposed palm print identification model with high security. We achieved 100% accuracy and more efficiency with the proposed model. Fig1 shows that the original palm image for registration process described in section 3.1, 3 (a) shows the original palm image, 3(b) shows it's binary image with morphing, 3(c) shows that the distance transformed image of a binary image and finally 3 (d) is a registered palm print for authenticating a person for authorization into a particular task.

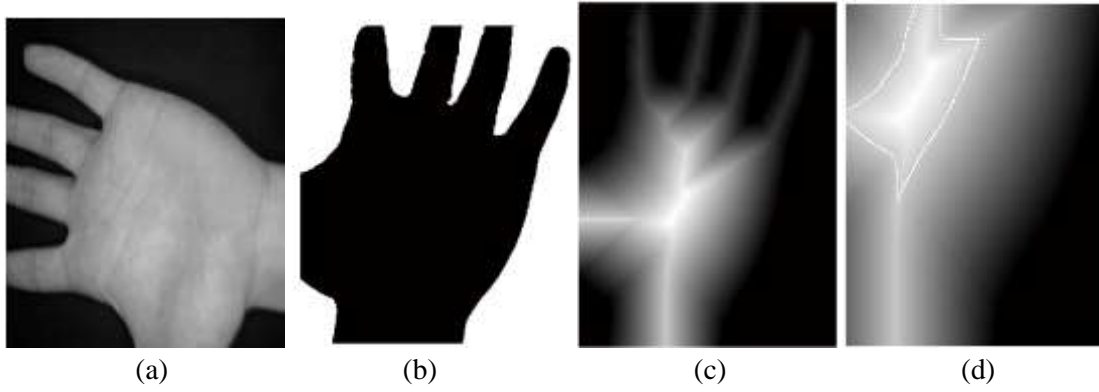


Fig. 3: (a) original palm image for registration (b) morphed image (c) distance transformed image and (d) registered palm image

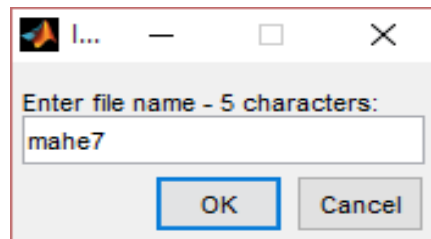


Fig. 4: Message box for saving the registered palm filename with mahe7



Fig. 5: distance transform of a test image



Fig. 6: Registered palm print of a test image

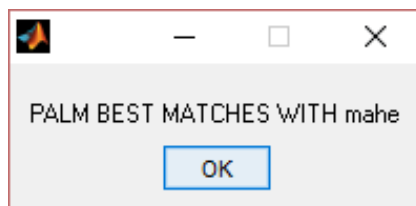


Fig. 7: Message box displayed after completion of test and matching process

5. CONCLUSION

Here, we introduced a novel and highly secured biometric authentication model with palm print identification system using morphological ROI extraction with distance transform and un-decimated biorthogonal wavelet transform. Due to its multi scaling functionality, two different wavelet filter banks will be used to extract the features of distance transformed image to obtain the most effective feature factor for comparing with a test feature vector. The proposed model has proven that it has achieved 100% accuracy with several test images from the database.

REFERENCES

- [1] D. Zhang, W. K. Kong, J. You, M. Wong, "Online Palm print Identification," IEEE Transaction on Pattern Analysis and Machine Intelligence, Vol.25, No. 9, pp. 0162-8828, Sept 2003.
- [2] G. Lu, D. Zhang, K. Wang, Palm print recognition using eigen palms features, Pattern Recognition Letters 24 (9) (2003) 1463–1467.
- [3] J. Dai, J. Feng, J. Zhou, "Robust and Efficient Ridge-Based Palm print Matching," IEEE Transaction on Pattern Analysis and Machine Intelligence, Vol.34, No. 8, pp. 0162-8828, August 2012
- Kong and D. Zhang, "Competitive coding scheme for palmprint verification," in Proc ICPR, 2011, pp. 520–523.
- [4] Huang, W. Jia, D. Zhang, "Palmprint verification based on robust line orientation code," Pattern Recognition, Science Direct, pp. 1504 – 1513, 2008.
- [5] Huang, W. Jia, D. Zhang, "Palmprint verification based on principal lines," Pattern Recognition, Science Direct, pp.1316 – 1328, 2008.
- [6] J. You, W. Kong, D. Zhang, and K. Cheung, "On hierarchical palm print coding with multiple features for personal identification in large databases," IEEE Trans. Circuits Syst. Video Technol., vol. 14, no. 2, pp. 234–243, Feb. 2009.
- [7] W. Li, J. You, and D. Zhang, "Texture-based palm print retrieval using a layered search scheme for personal identification," IEEE Trans. Multimedia, vol. 7, no. 5, pp. 891–898, Oct. 2009.
- [8] S. M. Prasad, V. K. Govindan, P. S. Sathidevi, "Palm print Authentication Using Fusion of Wavelet Based Representations," IEEE, pp. 978-1-4244-5612-3, 2009.
- [9] R. Cappelli, M. Ferrara, and D. Maio, "A Fast and Accurate Palm print Recognition System Based on Minutiae," IEEE Transaction on System, Man and Cybernetics- Part B: Cybernetics, Vol. 42, No. 3, pp. 1083-4419, June 2012.
- [10] Gyaourova and A. Ross, "Index codes for multi biometric pattern retrieval," IEEE Trans. Inf. Forensics Security, vol. 7, no. 2, pp. 518–529, Apr. 2012.