

# Expressing that you Care for people through Generative AI

*Lakshmi Namratha Vempaty*

## 1. Abstract:

Caring for People and the Significance of Workplace Positivity. In the contemporary landscape of work, the significance of caring for people and fostering workplace positivity has gained paramount importance. This abstract explores the intertwined concepts of nurturing employee well-being and cultivating a positive work environment. It delves into the multifaceted benefits of prioritizing care and positivity within the workplace, both for individuals and organizations.

The act of caring for people transcends conventional notions of employee-employer relationships. It encompasses acknowledging the holistic well-being of employees, including their physical, mental, and emotional health. The provision of support, resources, and avenues for personal growth contributes to a workforce that feels valued, engaged, and empowered. By demonstrating empathy, fostering work-life balance, and promoting open communication, organizations can create a culture of care that resonates deeply with employees.

Workplace positivity, on the other hand, goes beyond a mere absence of negativity. It encompasses an environment that fosters collaboration, optimism, and a shared sense of purpose. Positivity contributes to enhanced morale, increased productivity, and reduced stress levels. Moreover, a positive workplace becomes a magnet for top talent, as it offers an attractive and fulfilling space for professional growth and development.

This abstract underscore the symbiotic relationship between caring for people and workplace positivity. Organizations that invest in employee well-being and create positive work cultures tend to experience higher levels of employee retention and satisfaction. When individuals feel cared for and supported, they are more likely to exhibit dedication, creativity, and loyalty, resulting in increased overall organizational success.

In conclusion, the convergence of caring for people and promoting workplace positivity serves as a cornerstone for modern organizational dynamics. Recognizing the significance of employee well-being and creating an environment that fosters positivity leads to a harmonious equilibrium where individuals thrive, and organizations flourish. As the business landscape evolves, the imperative to prioritize the human element remains a constant, shaping the trajectory of workplaces toward a brighter, more caring, and positive future.

## 2. Problem Statement:

In contemporary workplaces, a concerning issue arises from the limited understanding and familiarity individuals often possess about their team members and co-workers. This lack of awareness can hinder effective collaboration, hinder communication, and impede the overall efficiency of the workforce. As a result, the question emerges: Why is it crucial for employees to truly know their team members, and what empirical evidence supports the idea that enhanced interactions among colleagues lead to a substantial increase in workforce productivity?

This problem statement addresses the critical concern of interpersonal connections within professional settings. The disconnect between colleagues can lead to miscommunication, hindered information flow, and the formation of isolated silos. Organizations might overlook the significance of forging meaningful relationships among team members, thereby failing to harness the collective potential of their workforce. This issue prompts an exploration into the potential consequences of disregarding the value of interpersonal connections at work.

Moreover, the problem statement delves into the necessity of understanding the underlying reasons behind prioritizing interactions among team members. By investigating the motivations and benefits of knowing one's colleagues, organizations can uncover the mechanisms through which enhanced relationships translate into increased productivity and improved overall performance. This understanding is vital for crafting effective strategies that foster a conducive environment for positive and collaborative interactions.

To provide a well-rounded perspective, the problem statement emphasizes the need to substantiate claims with empirical research. By delving into studies that elucidate the correlation between healthy team member interactions and workforce productivity, organizations can make informed decisions about implementing initiatives aimed at strengthening inter-colleague relationships. This empirical foundation ensures that the proposed solutions are not only intuitive but also backed by substantial evidence.

In conclusion, the problem statement underscores the importance of addressing the limited knowledge of team members and co-workers and its implications on workplace dynamics. By examining the multifaceted aspects of this issue, from the necessity of knowing colleagues to the empirical evidence supporting its benefits, organizations can pave the way for enhanced collaboration, communication, and productivity within their workforce.

### **3. Teamwork's Profound Impact on People and Productivity: Insights from Expert Perspectives**

Teamwork, a cornerstone of modern work dynamics, plays a pivotal role in shaping not only organizational success but also the well-being and engagement of individuals within teams. By delving into a collection of insightful articles and expert opinions, we uncover the multifaceted ways in which effective teamwork influences people and productivity.

In the Harvard Business Review's article "Global Teams That Work" [1], the complexity of global teams is explored, shedding light on the challenges and opportunities they present. The piece emphasizes the necessity of cohesive teamwork across geographical and cultural boundaries. Successful global teams are marked by open communication, mutual respect, and a shared understanding of diverse perspectives. Such teamwork not only improves project outcomes but also enhances individuals' cross-cultural competency and adaptability, enriching their professional growth.

"Getting Virtual Teams Right" [2], another HBR article, highlights the intricacies of managing remote teams. It underscores the importance of establishing clear communication channels, fostering a sense of belonging, and utilizing technology to bridge gaps. Effective teamwork in

virtual environments mitigates isolation and enhances collaboration, underscoring the impact of cohesive virtual teams on both individual satisfaction and overall productivity.

Shifting the focus to employee recognition, Quantum Workplace's exploration of "The Importance of Employee Recognition" [3] delves into how recognition within teams' bolsters motivation and job satisfaction. The article elucidates that when team members are recognized for their contributions, it fosters a sense of value and camaraderie. This, in turn, contributes to higher levels of engagement and productivity, underlining the symbiotic relationship between teamwork, recognition, and positive work outcomes.

Atlassian's perspective in "The Importance of Teamwork" [4] celebrates the idea that great teamwork transcends individual accomplishments. The article underscores the interdependence of team members in achieving shared goals. Effective teamwork entails the pooling of diverse skills, perspectives, and strengths, leading to improved problem-solving and innovation. Beyond tangible results, the sense of achievement and camaraderie nurtured through teamwork positively influences individuals' sense of purpose and fulfillment.

Yale University's discourse on the subject, "We Know Teamwork is Important—But How Important?" [5], encapsulates the essence of teamwork's impact on individuals and organizations. The article draws from research and experiential insights, emphasizing that teamwork fosters a sense of belonging, support, and shared accomplishment. This not only enhances employees' well-being but also cultivates a positive environment where innovative ideas thrive, leading to heightened overall productivity.

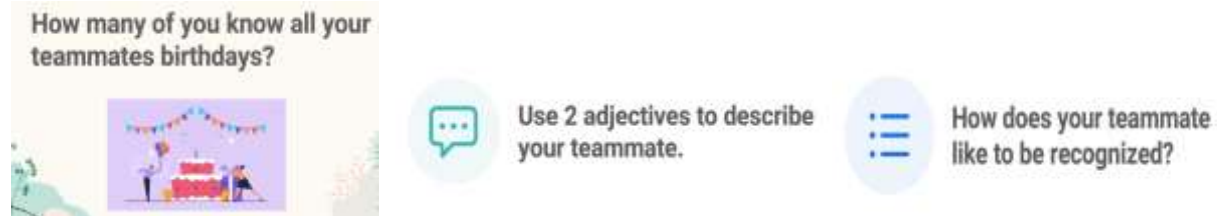
In conclusion, the amalgamation of insights from these expert sources underscores the profound impact of teamwork on both individuals and productivity. Effective teamwork transcends physical and cultural barriers, elevating cross-cultural competency and adaptability. It alleviates challenges within remote teams, enhances motivation through recognition, promotes collaboration and innovation, and nurtures a sense of purpose and belonging. By recognizing the significance of teamwork, organizations not only foster employee well-being but also lay the foundation for enduring success.

#### **4. Title: Unveiling Team Dynamics: Exploring Interpersonal Connections and Performance in NYU Courant Institute of Mathematical Sciences, Project Teams**

In the context of the modern work landscape, the role of effective teamwork in achieving superior outcomes has never been more prominent. However, a key question emerges: How well do team members truly know each other? To address this inquiry and gain a deeper understanding of its implications, a social experiment was conducted among teams at New York University (NYU). This experiment aimed to shed light on the correlation between team members' interpersonal connections and team performance.

Teams from diverse departments and projects across NYU were invited to participate in the experiment. Each team member was asked to complete a questionnaire designed to gauge their knowledge of their fellow team members, encompassing personal interests, professional

backgrounds, and communication styles. Simultaneously, teams were assessed on performance metrics, including project completion, creativity, collaboration, and overall success.



**Fig-1: Some samples questions asked at NYU.**

**5. My Findings:** The results of the experiment revealed intriguing insights into the relationship between interpersonal connections and team performance.

**Awareness Disparity:** A notable observation was the variance in how well team members knew each other. Some teams exhibited a deep understanding of their colleagues, while others displayed significant gaps in knowledge. This disparity suggested that the strength of interpersonal connections varies widely within working teams.

**Impact on Collaboration:** Teams with higher levels of familiarity among members demonstrated more seamless collaboration. These teams were better equipped to leverage everyone's strengths and communicate effectively, leading to improved problem-solving and innovation.

**Performance and Connection:** The experiment highlighted a positive correlation between strong interpersonal connections and overall team performance. Teams where members knew each other well tended to be more creative, productive, and successful in their endeavors.

**Motivation and Satisfaction:** Teams that fostered a sense of belonging and camaraderie experienced higher motivation levels among members. This translated into increased job satisfaction and a willingness to go the extra mile for team goals.

**6. Implications:** The social experiment's outcomes have significant implications for team-building strategies within organizations.

**Emphasis on Connection:** The experiment underscores the importance of investing in activities that encourage team members to get to know each other on a deeper level. Ice-breaking sessions, team-building workshops, and open communication channels can facilitate this process.

**Team Composition:** Organizations can consider team composition with interpersonal compatibility in mind. Teams that exhibit a balance of skills and personalities conducive to effective collaboration are more likely to thrive.

**Recognition and Reward:** Recognizing and celebrating teams that prioritize interpersonal connections and demonstrate exceptional performance can motivate other teams to foster similar dynamics.

The social experiment conducted at NYU provides compelling evidence of the pivotal role that strong interpersonal connections play in team performance. By shedding light on this connection, the experiment emphasizes the need for organizations to cultivate environments that encourage open communication, empathy, and a sense of camaraderie among team members. These findings lay the groundwork for enhancing team dynamics, collaboration, and overall success.

### **7. People getting busy and can't spend time to be creative enough/ caring enough to express their feelings to people in a workplace environment.**

In today's fast-paced work environments, the struggle to strike a balance between professional responsibilities and expressing emotions can be challenging. As individuals become engrossed in their tasks and deadlines, the opportunity to be creative and caring might take a backseat. This note explores the dynamics of this dilemma and suggests potential strategies to foster emotional expression amidst busyness [6].

In a world marked by high workloads, tight schedules, and constant connectivity, many individuals find it challenging to allocate time for emotional expression. Creative interactions and sincere displays of care might be overshadowed by pressing tasks and the demands of a rapidly evolving work landscape.[7]

The act of expressing gratitude through mediums like thank you cards, letters, or other forms of creative communication has become less common. As people become busier and more accustomed to instant digital interactions, the ability to craft thoughtful and creative expressions of appreciation has waned. This challenge presents a barrier to nurturing authentic connections and demonstrating genuine thankfulness. [10]

There was another social experiment that was conducted at NYU where we asked people who don't know each other to write some messages to each other.

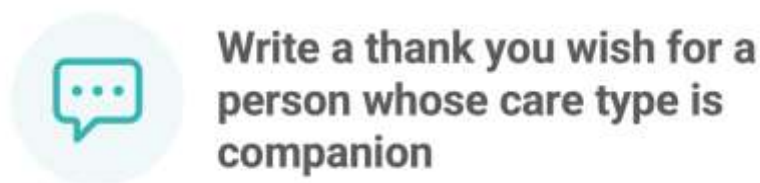


Fig2 – Experiment 2 -Questions Asked

It gets more and more complicated as we don't know what type of person the other people are and what they like and how they like to be appreciated and that is when I could think of generative AI as a solution to the rescue.

### 8. Generative AI in solving the human emotional connection problem at Workplace.

Generative AI technology holds the potential to revolutionize workplace interactions by providing insights into individual preferences and facilitating thoughtful gestures of care among colleagues. By analyzing available data, AI can help understand the personalities, preferences, and communication styles of co-workers, enabling personalized recommendations for meaningful gestures of care. Here's how generative AI can play a role:

**Personality Profiling:** Generative AI can analyze diverse data sources, including emails, messages, and social media posts, to develop personality profiles for individuals. By processing language patterns, content, and sentiment, AI can categorize co-workers into personality types, such as introverted, extroverted, analytical, or creative.[11]

**Communication Styles:** Generative AI can analyze communication patterns to determine whether a person prefers direct and concise communication or values detailed and nuanced discussions. This understanding helps tailor interactions in ways that resonate with them.[12]

**Recommendation Generation:** Once AI has gathered insights into personalities, preferences, and communication styles, it can generate personalized suggestions for gestures of care. These suggestions could range from recommending a favorite book, suggesting a coffee outing, or even proposing collaborative projects that align with a co-worker's interests.

**Preference Analysis:** AI can scan available data to identify co-workers' interests, hobbies, and preferences. It can detect keywords, mentions of activities, and trends in their interactions to build a comprehensive understanding of what they enjoy.[13]

**Suggesting what to write for their important events:** Based of different inputs into a model, we can make AI suggest people and help them write meaningful/caring and insightful messages.

### 9. Modelling solutions for Generative AI Text based suggestions

There are many advantages we have to our problem by using generative AI, like it can handle large amount of data, can be trained with any data we like, can help in creative writing and storytelling, Suggestions of words to use based on prompts.

Procedure to build the models: Understanding people and understand how they like to be cared for/ valued for and label people accordingly and then pass these parameters to the open- ai gpt models.

Open AI has different models, Davinci, Curie, Babbage, Ada and GPT Turbo. These models are trained using billions of parameters.

When I have used Ada, the results are not promising as it's not a prominent technique to use for text completion even though it is not that pricy.

Fluency	Sentiment
---------	-----------

<p>'Birthday, when defined relationship to the person, type of care I want to give' &lt;br&gt;&lt;br&gt;&lt;br&gt;&lt;br&gt;</p>	10%	5%
--	-----	----

I have used Davinici, Curie Babbage and GPT Turbo results are promising enough,



**Fig:3 – Messages using Modelling Techniques for Text Generation**

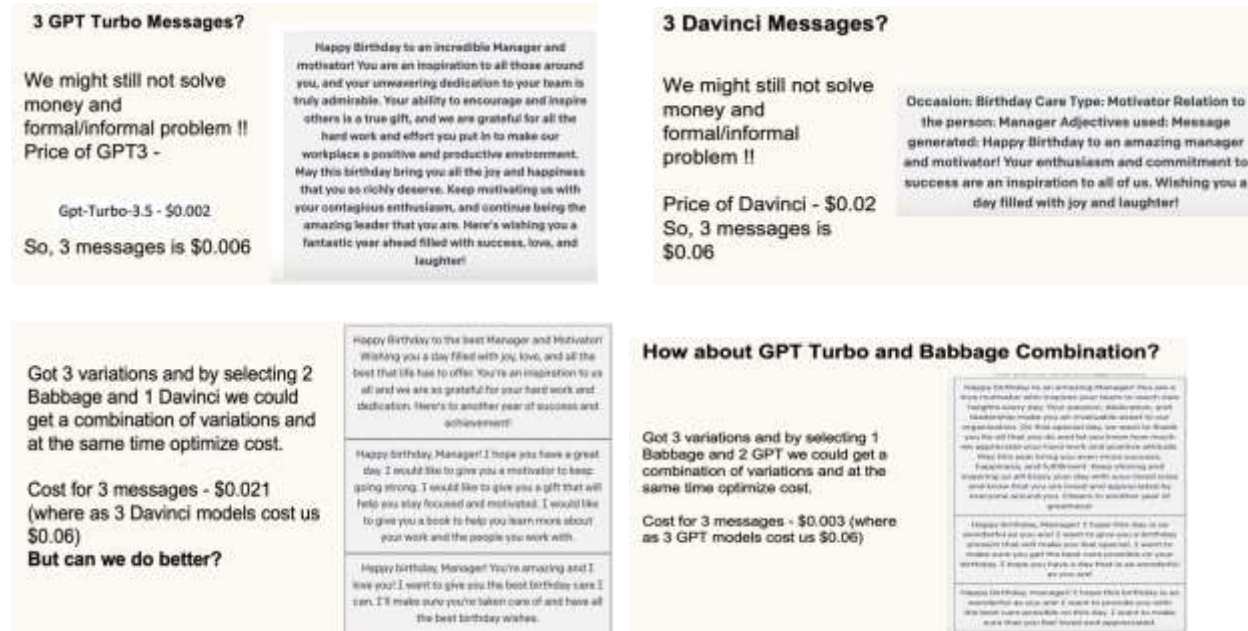
Models	GPT Turbo	Davinci	Curie	Babbage
<b>Fluency</b>	95%	98%	85%	77%
<b>Sentiment</b>	89%	96%	76%	75%

**10. Pricing Strategies and variation strategies for Text Based Models**

As I got very good fluency with GPT Turbo and Davinci I started looking at models for pricing and then realized there is another problem where I felt the need to give people choices and variations as they have their own choices of giving the letters/appreciations to different people, and I want to do it in a economic way. So questions I have tried to answer are,

- Different people like different styles of writing
- Text, we want to write for an occasion depends on how close/ how formal we would like to sound.
- So, giving one option will make them want to re-try again and again, which results in more money.
- How to optimize this? - Giving three options with less formal and more formal options
- How can we make it optimize cost and maintain the quality of messaging?

After working out different pricing strategies like below,



**Fig4: Modelling Outputs when used different strategies and give multiple outputs.**

So, based on the pricing optimization and variation strategy I have used I think using GPT Turbo and Babbage are useful which costed around \$0.06 for the models.

### 11. Visual AI Models for Images using Image Variation/Generation Techniques

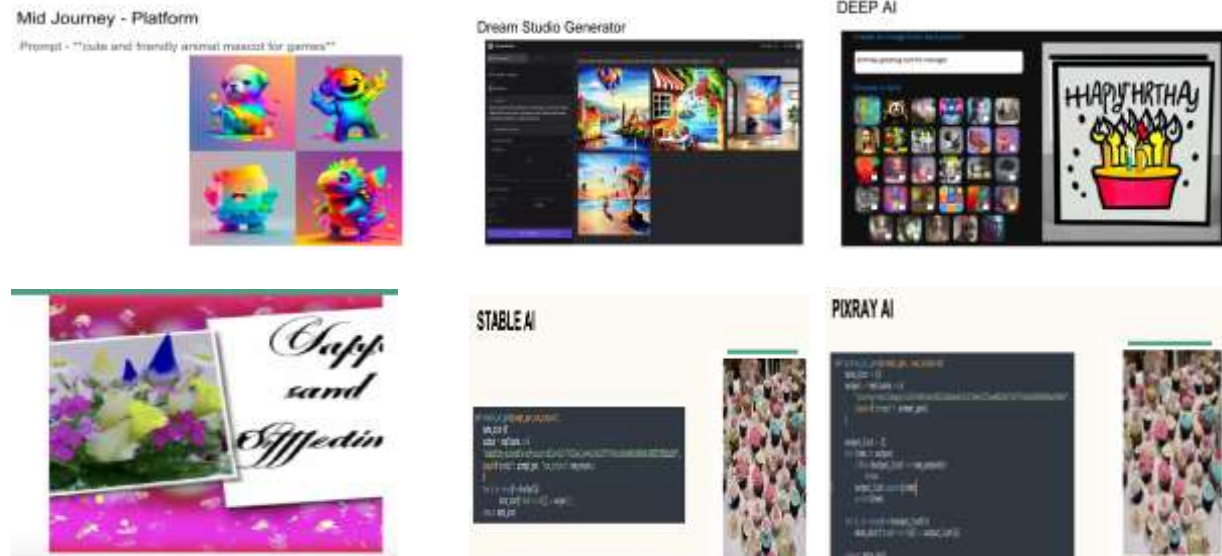
As they say, “a picture is 1000 words”. So, it always gives a good feeling when we club our messages with Images but finding selecting an exact image to cater our needs is a very difficult task. We want it to have few elements and not have few elements and at the same time we want it to be in certain way, color and we are very specific. Can AI help us, the users create these things? I would say yes, I have tried around 20+ models to come up with a criterion. And the following are the variants,

1. Generative AI using Text to Images
2. Generative AI using Text to 3D Images.
3. Generative AI using Text to Videos

When I tried all these different tools I have mentioned in [Appendix-A], I wanted to create a criteria to decide on these models. Wellm, there are lot of factors to consider and shortlist these, important ones I thought would be,

1. Usability and API Access
2. Quality of Images generated.
3. How the platform is serving our purpose
4. Cost Associated with each image generation.





After looking at all these different models, I had come up with a way to rank these and their usability.

Model	Mid Journey	Dream Studio Generator	Deep AI	OpenAI	Stable AI by Replicate	Pixray AI by Replicate
Usability	High	High	Medium	High	High	High
Quality	High	High	Low	Low	Medium	Medium
Pricing	Medium	Medium	Low	High	Low	Low
Generation Time	Fast	Fast	Fast	Fast	Medium	Slow

Based off the usability/quality and pricing – we can choose to use the combination depending on our use-case [Appendix2]

## 12. Exploring OpenSource Data Models for Image Generation and Image Libraries

Open source image processing models and libraries have transformed the landscape of visual content creation, manipulation, and distribution. These tools empower creators, developers, and designers to harness the power of advanced algorithms and vast image repositories. Two prominent examples are the "Big Sleep" image generation model and the open source image libraries like Pexels, Pixabay, and Unsplash.

### The Big Sleep and Open Source Image Generation:

"The Big Sleep" is an intriguing example of the potential of generative AI in the realm of image processing. It's a variant of OpenAI's "BigGAN" model designed for producing visually stunning and imaginative images. Through the analysis of a dataset of images, "The Big Sleep" AI learns

patterns, styles, and features, enabling it to generate new and unique visuals that often exhibit dream-like or surreal qualities. This open source model serves as a testament to the fusion of AI and art, showcasing how technology can be used to expand the boundaries of creativity.

### **Open Source Image Libraries - Pexels, Pixabay, Unsplash:**

1. **Pexels:** Pexels is a platform that offers a vast collection of high-quality, open source images. With a focus on diverse subjects, Pexels allows users to access and use images for various purposes, including creative projects, web design, and presentations. Its extensive library eliminates the need for complex image licensing and facilitates easy integration into different projects.
2. **Pixabay:** Pixabay is another widely used open source image library. It provides a treasure trove of images, vector graphics, and even videos that are free for use across various applications. The platform's user-friendly interface, extensive content variety, and permissive licensing make it a go-to resource for both designers and content creators.
3. **Unsplash:** Unsplash has gained immense popularity for its visually stunning and high-resolution images. Offering a mix of professional and amateur photography, Unsplash curates an array of captivating visuals that cater to diverse needs. The platform's open source ethos encourages users to share their work while making it available for others to utilize creatively.

**When I have validated these models , I had a better image generating rate using Big Sleep with “Medium” quality is “High”, Usability is “High” and generation time is “Medium”. Using opensource image libraries with prompts is also a good resource for images but it doesn't solve the problem of personalization of Images.**

### **13. Conclusion – Text Generation and Image Generation for expressing Care**

In the ever-evolving landscape of modern work, the fusion of AI-driven text and image generation offers a powerful means to express care for individuals, nurture positive workplace dynamics, and elevate human connections. This journey of exploration has unveiled a myriad of insights and solutions, spanning from understanding the significance of caring for people to harnessing the capabilities of generative AI.

The abstract initiates the discourse by highlighting the intrinsic value of caring for individuals and fostering workplace positivity. The symbiotic relationship between these two concepts serves as the cornerstone of a harmonious and thriving work environment. As organizations prioritize the holistic well-being of their employees and cultivate a positive culture, the impact resonates in enhanced collaboration, increased productivity, and overall success.

The problem statement delves deeper into the challenge of limited interpersonal connections within teams. By delving into the empirical evidence supporting the benefits of knowing one's colleagues and the repercussions of neglecting these connections, the importance of strong team dynamics becomes evident. This understanding is pivotal in driving strategies that enable effective communication, collaboration, and productivity.

The exploration into the profound impact of teamwork on individuals and productivity underscores the transformative potential of cohesive collaboration. Insights from expert perspectives underscore the essential role of cohesive teams in transcending boundaries, fostering innovation, and nurturing a shared sense of purpose. These perspectives emphasize the direct correlation between effective teamwork and enhanced individual well-being, providing a roadmap for organizations to cultivate successful work environments.

The experiment conducted at NYU sheds light on the practical implications of team members' knowledge about one another. The findings reveal a direct relationship between interpersonal connections and team performance, underlining the need for organizations to prioritize team cohesion and mutual understanding. These insights provide a foundation for enhancing collaboration, creativity, and overall success within teams.

Generative AI emerges as a solution to bridge the gap between busy schedules and heartfelt expressions. By understanding personalities, communication styles, and preferences, AI facilitates personalized gestures of care, strengthening connections between colleagues. The generative AI's ability to analyze data and generate thoughtful recommendations enriches interactions and enhances the impact of expressions of appreciation.

The journey into image generation through AI showcases the transformative power of technology in visual communication. From the Big Sleep model's dream-like images to open-source image libraries, creators have access to a wide array of visuals that can amplify their messages. Also, Mid journey's amazing quality of images generated is to be noted. The strategic utilization of generative AI and curated image repositories holds the potential to create deeply resonant and personalized expressions of care.

In conclusion, the integration of generative AI with the intention to care has unlocked a realm of possibilities for expressing emotions, fostering connections, and cultivating a positive workplace culture. The synergy between text and image generation, combined with the understanding of team dynamics, has the potential to reshape how we communicate, collaborate, and thrive within organizations. As technology and human empathy converge, the future holds a promising landscape of caring interactions that enrich our professional lives and forge lasting connections.

## Appendix

### Text to Images

1. DALL-E 2 API by OpenAI
2. CLIPDraw by Hugging Face
3. AttnGAN by Tao Xu et al.
4. StackGAN++ by Han Zhang et al.
5. T2F by Nishchal K. Verma et al.
6. BigGAN-deep by Andrew Brock et al.
7. GPT-2 image generation by [EleutherAI](#)
8. Fotor
9. NightCafe
10. [DreambyWombo](#)
11. [Craiyon](#)
12. Deep Dream Generator
13. [StarryAI](#)
14. ArtBreeder
15. PhotoSonic
16. [MidJourney](#)
17. [DreamStudio](#)
18. DeepAI
19. BigSleep

### Text to 3D Images

1. DeepSDF
2. 3D-VAE
3. VoxelGAN
4. Pix2Vox
5. GANverse3D
6. IM2CAD
7. Sketch2CAD

### Text to Videos

1. Wav2Lip
2. Talking-heads
3. Deep Video Portraits
4. First Order Motion Model for Image Animation
5. Avatarify
6. [DeepFaceLab](#)

### Appendix A: List of Models for Text/Prompt to Image/Video Models

Name	Advantages	DisAdvantages	Pricing
DALL-E 2 API by OpenAI	Can be used for a variety of tasks such as generating artwork, designing products, or creating avatars	I personally didn't like the quality of images and pricing associated.	<b>\$0.02 per image</b>
CLIPDraw by Hugging Face	using CLIP and GPT-3.Can generate high-quality images with a wide range of styles and objects	Limited control over the generated images	Free to use - limited calls,
Fotor	Provides a range of photo editing and design tools	API access requires signing up and approval from Fotor	Free to use - limited calls,
NightCafe	Offers fine-grained control over the image attributes	Access to the API is not publicly available	Free to use - limited calls,
Deep Dream Generator	Can generate high-quality images with a range of styles and objects	Watermark is added to free images	Free to use - limited calls,
<a href="#">DreambyWombo</a>	Offers a user-friendly interface for generating images.Can be used to generate animations	Watermark is added to free images	Free to use - limited calls,
<a href="#">StarryAI</a>	Can be used to generate animations	Watermark is added to free images	Free to use - limited calls,
ArtBreeder	Can be used to generate animations.Offers fine-grained control over the image attributes	API access requires signing up and approval	Free to use - limited calls,
PhotoSonic	Can be used to generate animations.Offers fine-grained control over the image attributes	API access requires signing up and approval	Free to use - limited calls,
<a href="#">Craiyon</a> / <a href="#">MidJourney</a> / <a href="#">DreamStudio</a> / <a href="#">DeepAI</a> / <a href="#">BigSleep</a>	Offers a range of image editing and design tools.High Quality Images with animations too!!	API access requires approval	Free to use - limited calls,

### Appendix B: List of Image Models and their Advantages/Disadvantages and Pricing

**References:**

1. <https://hbr.org/2015/10/global-teams-that-work>
2. <https://hbr.org/2014/12/getting-virtual-teams-right>
3. <https://www.quantumworkplace.com/future-of-work/importance-of-employee-recognition>
4. <https://www.atlassian.com/blog/teamwork/the-importance-of-teamwork>
5. <https://your.yale.edu/we-know-teamwork-important-how-important>
6. Amabile, T. M., & Pratt, M. G. (2016). The dynamic componential model of creativity and innovation in organizations: Making progress, making meaning. *Research in Organizational Behavior*, 36, 157-183.
7. Dutton, J. E., & Heaphy, E. D. (2003). The power of high-quality connections. *Positive organizational scholarship: Foundations of a new discipline*, 263-278.
8. Gino, F., & Pisano, G. (2008). Toward a theory of behavioral operations. *Manufacturing & Service Operations Management*, 10(4), 676-691.
9. Frost, P. J., & Egri, C. P. (1991). The Political Process of Innovation. *Research in the Sociology of Organizations*, 9, 267-296.
10. Grant, A. M., & Gino, F. (2010). A little thanks goes a long way: Explaining why gratitude expressions motivate prosocial behavior. *Journal of Personality and Social Psychology*, 98(6), 946-955.
11. Ueno, K., & Verhagen, T. (2019). An exploration of using personality traits to predict team performance. *International Journal of Human-Computer Interaction*, 35(18), 1666-1678.
12. Hamidi, F., Mardani, A., & Nilashi, M. (2020). Personality-based recommender system: A systematic literature review. *Engineering Applications of Artificial Intelligence*, 94, 103887.
13. Klimmt, C., Hefner, D., Vorderer, P., Roth, C., & Blake, C. (2009). Identification with video game characters as automatic shift of self-perceptions. *Media Psychology*, 12(4), 340-363.
14. <https://platform.openai.com/docs/api-reference>
15. [https://huggingface.co/docs/transformers/model\\_doc/clip](https://huggingface.co/docs/transformers/model_doc/clip)
16. <https://www.fotor.com/features/ai-image-generator/>
17. [https://creator.nightcafe.studio/?gad=1&gclid=CjwKCAjw\\_uGmBhBREiwAeOfsd-x0CElrQ\\_7pYOekKR0NqS3Ar01onCX8maZMBrEyy0BZsj7NvSyYuxoC-KQQA vD\\_BwE](https://creator.nightcafe.studio/?gad=1&gclid=CjwKCAjw_uGmBhBREiwAeOfsd-x0CElrQ_7pYOekKR0NqS3Ar01onCX8maZMBrEyy0BZsj7NvSyYuxoC-KQQA vD_BwE)
18. <https://deepdreamgenerator.com/>
19. <https://www.w.ai/>
20. <https://www.artbreeder.com/>
21. <https://writesonic.com/photosonic-ai-art-generator>
22. <https://www.crayon.com/>
23. <https://www.midjourney.com/home/?callbackUrl=%2Fapp%2F>
24. <https://beta.dreamstudio.ai/generate>
25. <https://deepai.org/>
26. <https://github.com/lucidrains/big-sleep>
27. <https://www.pexels.com/api/>
28. <https://pixabay.com/api/docs/>
29. <https://unsplash.com/developers>