

Content Based Image Retrieval System Using Integrated Feature Extraction Approach

Subhashree Sukla¹, Jyostnarani Tripathy¹, Anjali Behera²

^{1,2}Assistant Professor, ^{1,2}Dept. of CSE

¹Gandhi Institute for Technology, Bhubaneswar, India

²Gandhi Engineering College, Bhubaneswar, Odisha, India

Abstract

This article implemented an efficient content-based image retrieval (CBIR) system using integrated feature extraction approach where spatial dependence matrix (SDM) is utilized to extract the texture features from the given images while translation invariant discrete wavelet transform (TIDWT) employed for low-level feature extraction. Further, this approach considered Tanimoto distance for showing the effectiveness of proposed hybrid CBIR system. Extensive experimental analysis discloses that proposed hybrid CBIR system improves efficiency tremendously over conventional CBIR systems.

Key words: CBIR, Spatial dependence matrix, Discrete wavelet transform, Similarity measurement and Precision

1. Introduction

Due to the rapid development of computing hardware, digital acquisition of information has become one of popular method in recent years. Every day, Gigabytes of images are generated from various sources. Military, Medical, Journalism are few to name among them. Use of digital content necessitates the development of effective ways for management and retrieval of visual information. Basically, images can be retrieved in two different ways, firstly, by text and secondly, by content. Text based approach is very well known and widely used. In this approach a user can search a desired image by entering keywords related to the image. Though the method is simple, it suffers from the problem of human perception-based image annotation. This means that the keywords used to search the image are language dependent. An alternative to text-based approach is Content Based Image Retrieval (CBIR) [1]. CBIR is a technique which uses visual features of an image such as color, shape, texture, etc. to search images from a large database like user's query [2]. The CBIR system have been used in variety applications such as Crime prevention, Architectural and Engineering design, Fashion and Interior design, Journalism and Advertising, Medical diagnosis, Home Entertainment and Web searching etc.

Rest of the paper is as follows: Section 2 explains the work done so far in the CBIR field and described the drawbacks of existing DWT based CBIR system. Proposed CBIR methodology is described in section 3 which explains about TIDWT and SDM approaches. Section 4 is given for results and discussion. Conclusions are provided in section 5 followed by references.

2. Related Work

In the past decades several CBIR systems have been proposed, and still the researchers are focusing on developing extended CBIR systems with more effective results. The letter proposed in [3] gives a comparison of different approaches of CBIR based on similarity

measures and image features to identify the similarity between the images, which provides accurate information for retrieving the relevant images from large database. Wan Siti *et.al* proposed in [4] compares the several medical image retrieval systems based on the feature extraction and to improve the effectiveness of the CBIR system for medical images such as magnetic resonance (MR) images and computed tomography (CT) images [9]. The major concept proposed in [4] is to help in the diagnosis such as to find the similar disease and monitoring of patient's progress continuously. B. S. Manjunath *et.al* presented in [5] is the combination of color, texture with inclusion of edge compactness for Motion Picture Expert Group (MPEG)-7 standards. Another approach proposed in [6] used different color spaces such as HSV and YCbCr explains a similar approach based on color and texture analysis. The work proposed in [7] introduces a new retrieval system which has done by using wavelet transformation with both color and texture features together and will perform better than existed state of art algorithms. Retinal image retrieval system called CBIR for retinal and blood vessels extraction is presented in [8] which has been analyzed by the histogram features of RGB color components. The multi resolution analysis has applied to the image to acquire the texture information. In addition to improve the performance, morphological operations are applied to study the shape of object.

Swati Agarwal has proposed a new CBIR system in [10], which is by using discrete wavelet transform and edge histogram descriptor (EHD). Here the retrieval is based on color and texture features not by using color information in the image, input image first decomposes the input query image into several sub bands i.e., approximation coefficients and detail coefficients, where detail coefficients consists of horizontal (LH), vertical (HL) and also the diagonal information (HH) of the image. Afterwards, EHD is used to gather the information of dominant edge orientations. This mixture of 3D-DWT and EHD will improve the efficiency of the CBIR system. Recent times, many researchers focused on wavelet based CBIR system by adopting any texture feature extraction approach [11-14]. However, DWT suffers from lack of translation invariancy which plays a key role in extracting low-level features from input image while decomposing it. In latter subsection, the process of DWT and its drawbacks explained in detail.

2.1. Discrete Wavelet Transform

Discrete Wavelet Transform (DWT) is a modified version of Continuous Wavelet Transform (CWT). DWT principles are very similar to the CWT however the wavelet scales and positions are based upon powers of two. The basic principle of DWT is to pass the input signal through a group of filters i.e., low pass and high pass filters to get the low frequency (LF) and high frequency (HF) of source signal. Low frequency contents include LL and these coefficients are known as the approximation coefficients. This means the approximations are obtained by using the high scale wavelets which corresponds to the low frequency. The high frequency components which are known as LH, HL and HH of the signal are called the details which will be obtained by using the low scale wavelets which corresponds to the high frequency. The process of DWT filtering includes, first the signal is fed into the wavelet filters. These wavelet filters comprise of both the high-pass and low-pass filter. Then, these filters will separate the high frequency content and low frequency content of the signal. However, with DWT the numbers of samples are reduced according to dyadic scale. This process is called the sub-sampling. Sub-sampling means reducing the samples by a given factor. Due to the disadvantages imposed by CWT which requires high processing power the DWT is chosen due its simplicity and ease of operation in handling complex signals.

However, this approach has been suffering from the decimation property of DWT, because when we apply the DWT decomposition to an image, it will decompose the

image into four sub bands with reducing the size of it to the half of actual image size. Due to this decimation we lose some original information while processing with DWT. Therefore, to improve the performance of CBIR system further, one needs to gain the lost information and add it with high frequency sub bands to get efficient features at low-level.

3. Proposed System

3.1. Translation Invariant Discrete Wavelet Transform

It is a wavelet transform algorithm designed to overcome the lack of translation-invariance of DWT. Translation-invariance is achieved by removing the down samplers and up samplers in the DWT and up sampling the filter coefficients by a factor of $2^{(j-1)}$ in the j^{th} level of the algorithm. The TIDWT is an inherently redundant scheme as the output of each level of TIDWT contains the same number of samples as the input – so for a decomposition of N levels there is a redundancy of N in the wavelet coefficients. The following block diagram depicts the digital implementation of TIDWT.

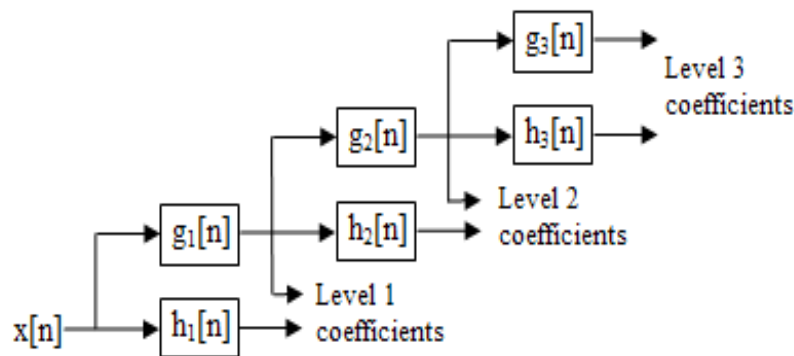


Figure 1. TIDWT filter bank with 3 levels

In the above diagram, filters in each level are up-sampled versions of the previous (see figure below).



Figure 2. TIDWT filters

3.2. Spatial Dependence Matrix

It is known as the texture investigated method with statistics in which the pixels spatial relationship is considered in a range of greyscale. Texture characterization of a source image is done by computing how frequently pixel pairs with specific intensity values and the occurrence of specified spatial relationship in an image. Then after, computing the extracted measure of statistics from this obtained SDM matrix provides texture information of source image.

3.2.1. Contrast

It gives the intensity contrast measurement of a pixel to its neighbour over the whole word image

$$Contrast = \sum_{i,j} |i - j|^2 p(i, j) \quad (1)$$

Where p is a word image with a size of $i \times j$ in which the number of rows denoted by i and number of columns denoted by j

3.2.2. Correlation

It returns a measure of how correlated a pixel to its neighbour over the whole word image with a range of -1 to 1

$$Correlation = \sum_{i,j} \frac{(i-\mu_i)(j-\mu_j)p(i,j)}{\sigma_i \sigma_j} \quad (2)$$

μ represents the mean value and σ_i, σ_j are the variances of i and j

3.2.3. Energy

It provides the squared sum of the elements presented in gray scale matrix of word image

$$Energy = \sum_{i,j} p(i, j)^2 \quad (3)$$

3.2.4. Homogeneity

It will be used to measure the closeness of the elements distribution in the gray scale matrix to its diagonal

$$Homogeneity = \sum_{i,j} \frac{p(i,j)}{1+|i-j|} \quad (4)$$

Where p is a word image with a size of $i \times j$

4. Simulation Results

This section describes the simulation results of CBIR system based on the proposed and conventional schemes like DWT, DWT-EHD and DWT-EHD-HSV. It is implemented on MATLAB 2016b on a PC with Intel dual core 3rd generation processor having 8 GB of RAM capacity. The database consists of 1000 images belonging to 10 different classes. There are 100 images from each category. The images are of size 256x256 pixels. Out of these 100 images from each class, 25 images are used as query, while rest 75 images serve as database from which the similar images are retrieved. Thus, in all 75 images from each class are tested against 25 different queries and the performance of the algorithm is analyzed. The top 12 retrieved images of proposed CBIR system is disclosed in Figure 3, Figure 4 and Figure 5 respectively.

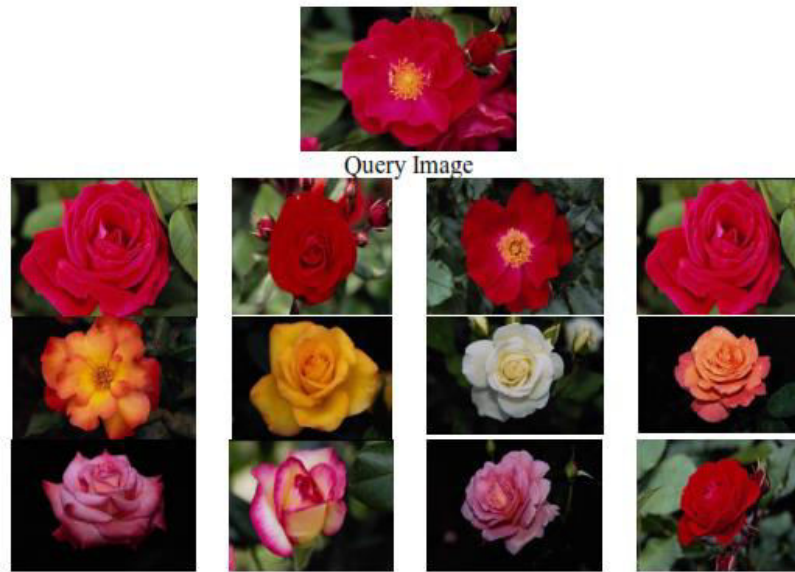


Figure 3. Flower as a query and the top 12 retrieved images from database

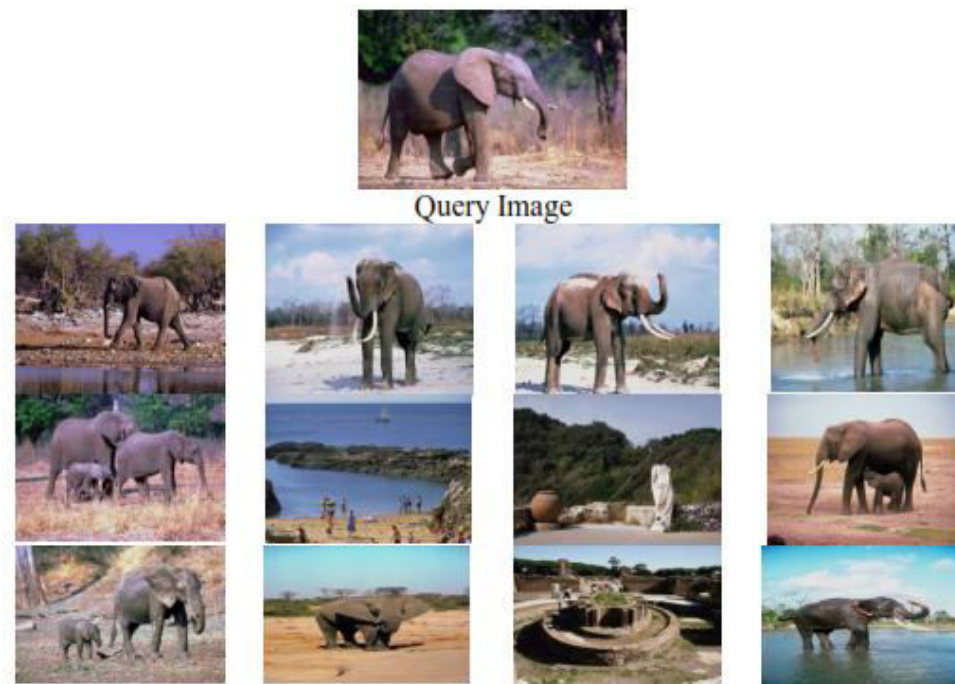
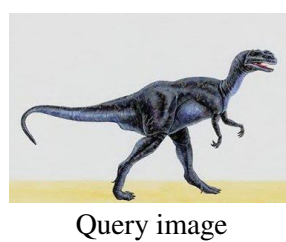


Figure 4. Elephant as a query and top 12 retrieved images from database



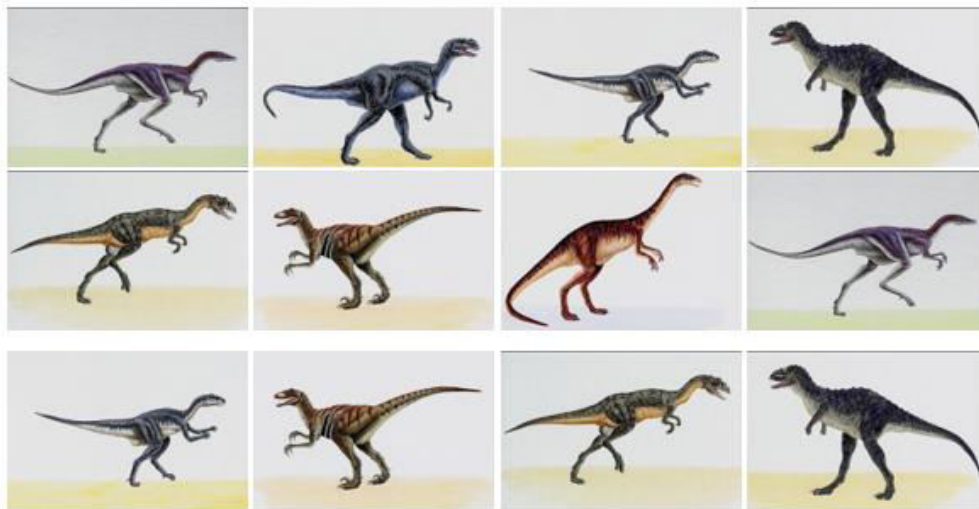


Figure 5. Dinosaur as a query and top 12 retrieved images from database

5. Conclusion

This article proposed an efficient hybrid CBIR system with the integration of SDM and TIDW transform which extracted both texture and low-level features. Further, Tanimoto distance is utilized for similarity measurement. Extensive experimental analysis disclosed that proposed hybrid CBIR system performed superior to the conventional CBIR systems.

References

- [1] D. Feng, W. C. Siu, and H.J. Zhang, "Fundamentals of Content Based Image Retrieval, in Multimedia Information Retrieval and Management Technological Fundamentals and Applications", New York: Springer, 2003.
- [2] A. W. M. Smeulders, M. Worring, S. Santini, A. Gupta, and R. Jain, "Content-based image retrieval at the end of the early years," IEEE Transactions on Pattern Analysis and Machine Intelligence, Vol. 22, pp. 1349–1380, Dec-2000.
- [3] Khan, S.M.H., Hussain, A. ;Alshaikhi, I.F.T., "Comparative Study on Content Based Image (CBIR)," International Conference in Advanced Computer Science Applications and Technologies (ACSAT), 2012.
- [4] Wan Siti, H. Munirah, W. Ahmad, M. Faizal and A.Fauzi, "Comparison of Different Feature Extraction Techniques in Content Based Image Retrieval For CT Brain Images," 10Th IEEE workshop on Multimedia Signal Processing, pp. 503-508, 2008.
- [5] B. S. Manjunath, J. R. Ohm, V. V. Vasudevan, A.Yamada, "Colour and Texture Descriptors," IEEE Transactions on Circuits and Systems for Video Technology, 1998.
- [6] P. S. Hiremath, S. Shivashankar, J. Pujari, "Wavelet Based Features for Color Texture classification with Application to CBIR," International Journal of Computer Science and Network Security, Vol. 6, No.9A, September 2006.
- [7] Tian Yumin, Mei Lixia, "Image Retrieval Based on Multiple Features Using Wavelet," 5th IEEE International Conference on Computational Intelligence and Multimedia Applications (ICCIMA'03), 2003.
- [8] M. R. Zare, R. N. Ainon, W. C. Seng, "Content-based Image Retrieval for Blood Cells," Third Asia International Conference on Modeling & Simulation, 2009.
- [9] Prasad, B.G., Krishna, A.N., "Statistical Texture Feature Based Retrieval and Performance Evaluation of CT Brain Images" 3rd International Conference on Electronics Computer Technology (ICECT), Vol. 2, April 2011.

- [10] Swati Agarwal, A.K. Verma, Preethvanti Singh, "Content Based Image Retrieval using Discrete Wavelet Transform and Edge Histogram Descriptor" International conference on Information Systems and Computer Networks, 2013.
- [11] M. A. Ansari and M. Dixit, "An enhanced CBIR using HSV quantization, discrete wavelet transform and edge histogram descriptor", International Conference on Computing, Communication and Automation, IEEE, Greater Noida, India, May 2017.
- [12] D. R. Dhotre, G. R. Bamnote and P. H. Shekokar, "Multilevel Haar wavelet transform and histogram based relevant image retrieval system", International Conference on Computing Methodologies and Communication, IEEE, Erode, India, July 2017.
- [13] A. Nazir, R. Ashraf, T. Hamdani and N. Ali, "Content based image retrieval system by using HSV color histogram, discrete wavelet transform and edge histogram descriptor", International Conference on Computing, Mathematics and Engineering Technologies, IEEE, Sukkur, Pakistan, Mar. 2018.
- [14] F. Nausheen, R. Kamble and M. Kokare, "Image Retrieval based on Wavelet and Optimized Local Gaussian Difference Extrema Pattern", IEEE 13th International Conference on Industrial and Information Systems, Rupnagar, India, Dec. 2018.